

ركن الفنية المتقدمة
Advance Tech Edge

Company Profile

Content

I. Who we are

Company Introduction
Key Personells
Our Mission
Our Vision
Our Skills
Safety
Our Core Values
Organization Chart

II. What we do

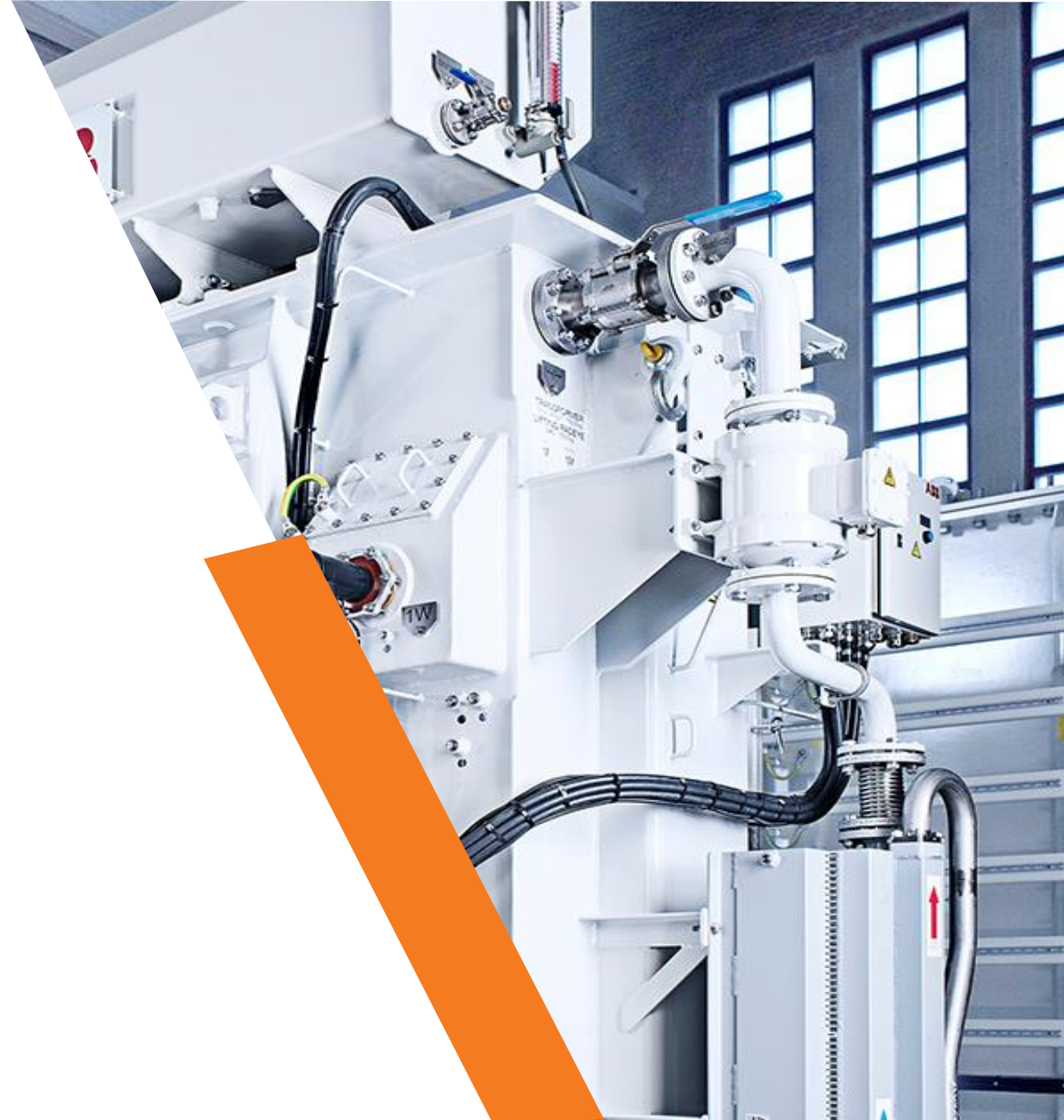
Engineering
Mechanical
Plumbing
Electrical

III. Legal Documents

IV. Our Projects

V. Our Clients

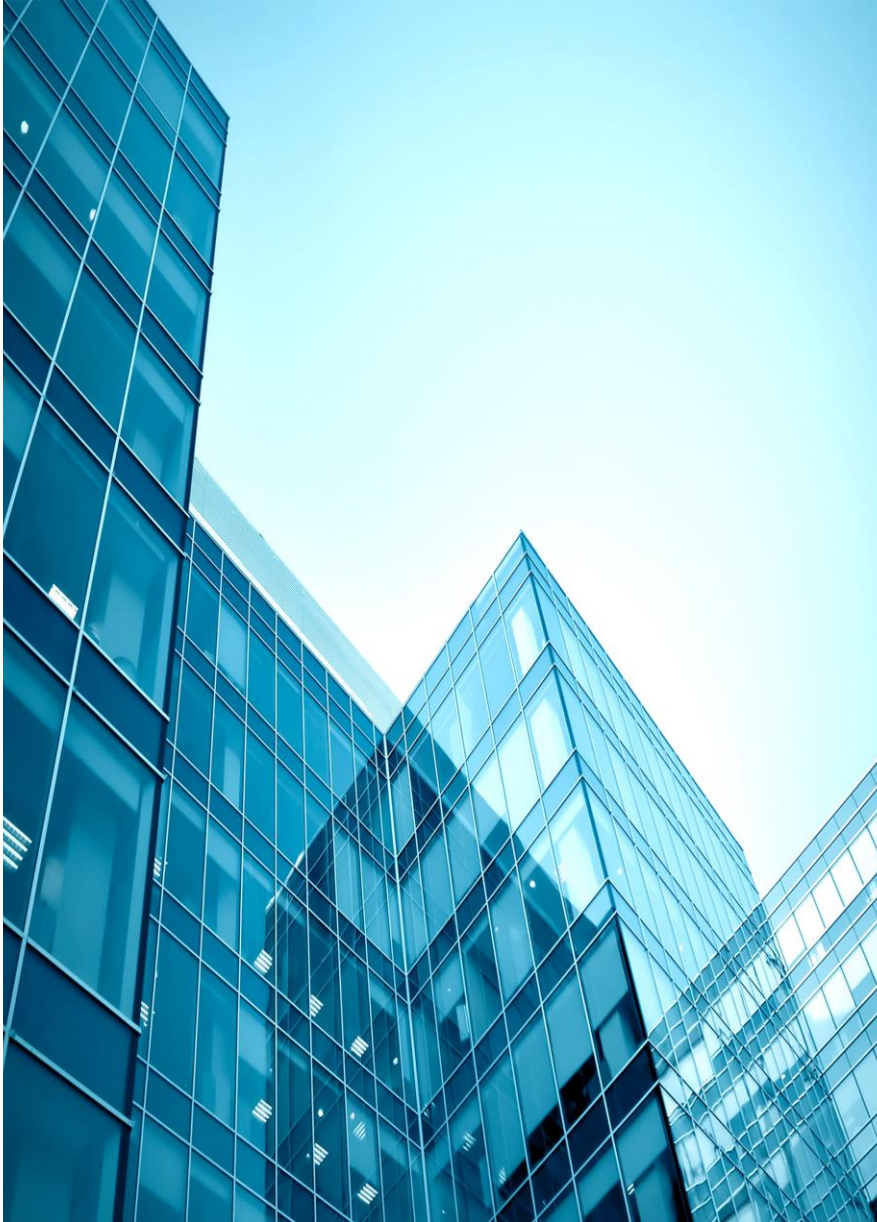
VI. Contact US



Who we are

Looking ahead is our success





Company Introduction

Advance Tech Edge Contracting, a proud sister company of Bastmat Al Omran, stands as a distinguished leader in the construction industry throughout the Kingdom of Saudi Arabia. Established in 2004, Advance Tech Edge Contracting has accumulated a wealth of expertise and knowledge over two decades, making it a trusted partner in the design and construction of projects that serve both the public and private sectors. Our longstanding reputation for quality, innovation, and reliability has cemented our status as a cornerstone of the industry.

Our Legacy and Milestones

Since its founding Advance Tech Edge Contracting has maintained a steadfast commitment to excellence. With a history rooted in the values and standards we have grown alongside the Kingdom's evolving infrastructure needs. Our company has completed numerous landmark projects that have supported the Kingdom's ambitions, aligning with Vision 2030 and its initiatives for economic and infrastructural development. Over the years, we have built a reputation for successfully delivering complex and large-scale projects, from government buildings to private sector facilities.

Company Overview

We are a dynamic company committed to ensuring first class services to our clients. We have registered our mark by executing successfully various prestigious projects in diverse domains, such as Industrial, Oil & Gas, Commercial and Retail, Residential Development, Education & Campus, Healthcare & Medical, Hospitality & Resort and Roads & Civil Work projects.

We are proud to have been trusted by many reputable clients and partners domestically and regionally. Our commitment to outstanding job completion, excellent customer service and unequalled safety performance has made us a partner of choice in the construction industry.





**Eng. Mujahid
Hussain (CEO)**

Eng. Mujahid Hussain has high experience managing all aspects of the design and construction process, provides overall leadership and direction to ensure the Construction Authority achieves its vision, mission, goals and objectives. Organizes and manages Construction Authority staff and contractors to provide effective and efficient transportation planning, and construction Approves and adopts Construction Authority's policies, procedures; and maintains accountability for the performance of the entire agency

- Provides overall leadership and staff direction in formulating and achieving Construction Authority's objectives
- Makes recommendations to the team on significant matters affecting Construction Authority operations and policies
- Oversees the development and implementation of short range and long-range goals and business plans
- Directs and manages staff to efficiently and effectively implement the policies and direction of the Board of Directors
- Provides leadership for the region's mobility agenda and coordinates regionally significant projects and programs by working collaboratively with regional partners Oversees Construction Authority's planning efforts, including identifying major priorities, establishing goals and strategies that ensure the success



**Khursheed Alam
General Manager**

Mr. Khursheed has 20 + years of experience in Saudi Arabia, and India served as a Management skills. He has professional experience in many fields such as engineering, operations & maintenance, projects management and planning & control in various Projects and industries. He is responsible for the overall performance and successful management of the projects. Mr. Khursheed maintains a primary focus on practice related services (management of the delivery of all project management related services).



Eng. Pervez Siddiqui (Construction Manager)

Mr. Pervez 10+ years of experience in construction department with Construction industry .He is responsible for ensuring that all Structural activities within the designated areas are well planned, coordinated, and utilizes all available resources in coordination with other functional managers in directing and supervising all involved site personnel and subcontractors. He also leads and ensures all work groups are properly guided, in close cooperation with the project manager, in assembling and controlling the required resources (manpower, equipment, materials and tools required) to start and sustain the work efficiency and productivity until the completion of the project. Additionally, he inspects work in progress to ensure conformity with QA/QC specifications and requirements.



Eng. Mohammad Abdul Adil MEP Manager

Eng. Mohammad Abdul Adil Has 20+ years of experience in Saudi Arabia UAE and India. He served as MEP manager for various international and local firms. He is responsible to provide technical direction on business decisions and execution of specific projects and developed system for reporting to monitor and track technical issues review company policies and procedures address to all project related aspects is the key bridge communicator with board of directors to the project management team for all matters related to engineering procurement and construction business.

الرؤيا

Vision

To be the premier choice for construction services in Saudi Arabia, known for our integrity, reliability, and commitment to excellence in every project.





اهدافنا

Mission

To set new standards in the construction industry, delivering projects that reflect quality, durability, and precision. We aim to enhance the Kingdom's development through strategic, sustainable, and safe construction solutions that serve the community at large.



Why Choose Us?

Established Expertise: Backed by Bastmat Al Omran's legacy, we bring more than 20 years of knowledge to every project.

Innovation in Design: Our approach combines modern techniques with sustainable practices to create structures that are functional, aesthetic, and environmentally conscious.

Dedicated Project Management: We prioritize timely delivery, budget adherence, and thorough quality control.

Client-Centered Approach: We prioritize timely delivery, budget adherence, and thorough quality control.



Safety

Team Advance Tech Edge its success with its multidisciplinary expertise in the complete process of tertiary and industrial facility design and contracting. Our team's specialized skills are manifested from design review through project management to the final delivery of turnkey projects. Most of our senior engineers and staff have acted as project managers, both in-house and for various international customers interfacing with other engineering firms and contractors.




Our Core Values


Our work is guided by core principles that reflect our commitment to our clients, our employees, and the communities we serve:




Integrity: We conduct every project with honesty and transparency, building trust with our clients through clear communication and dependable service.



Quality: Excellence is at the heart of everything we do. We adhere to the highest standards of construction, delivering durable and reliable structures.



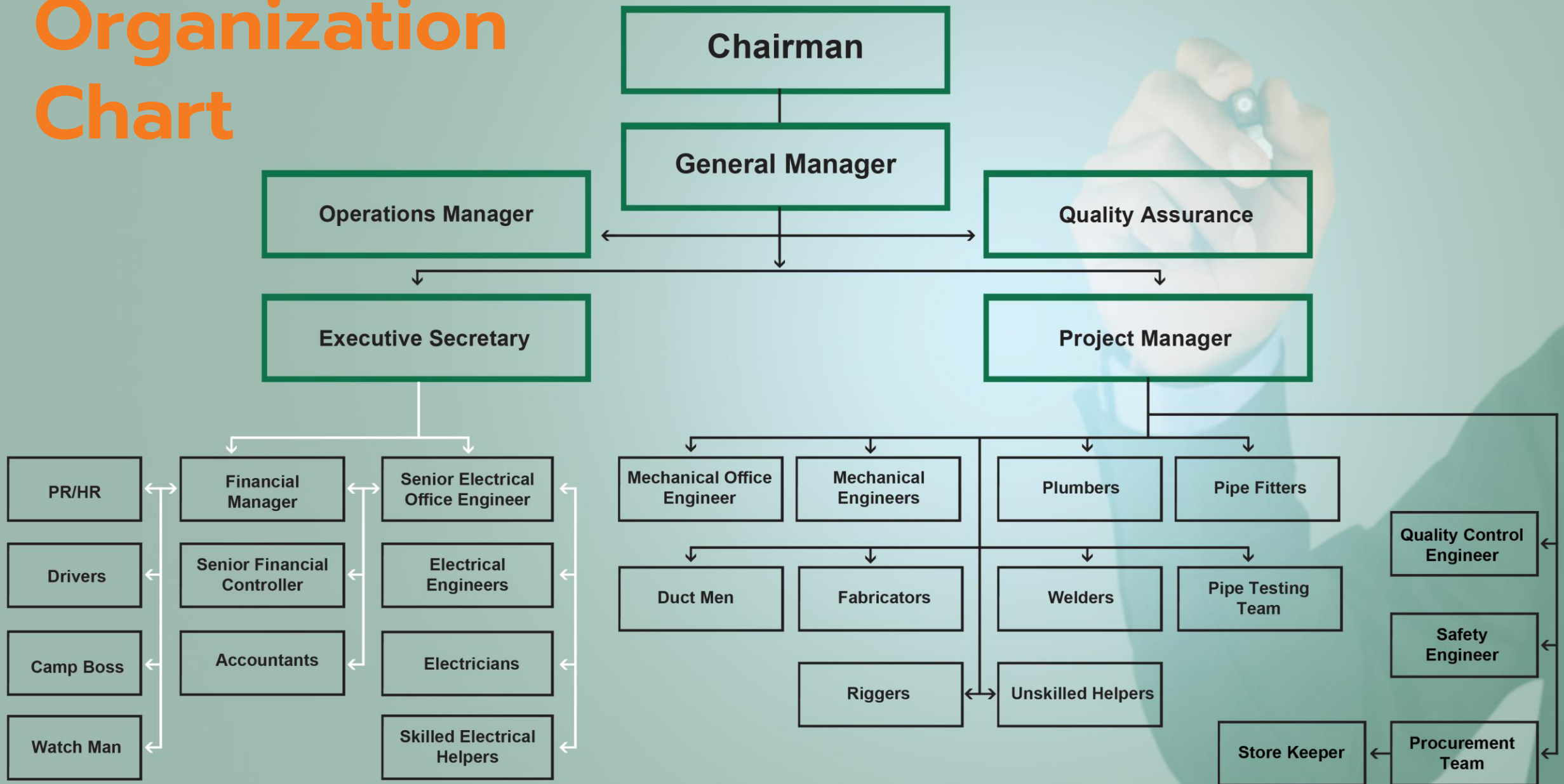
Human Capital: We believe in our team. Our most valuable asset is our team. We cherish a learning culture and nurture the potential of our employees.



Innovation: Embracing the latest technologies and methods, we continuously refine our approach to create efficient, sustainable, and modern solutions.

Safety: We prioritize the safety of our teams, clients, and end-users, implementing rigorous safety protocols and adhering to all regulatory requirements.

Organization Chart



What we do





What we do

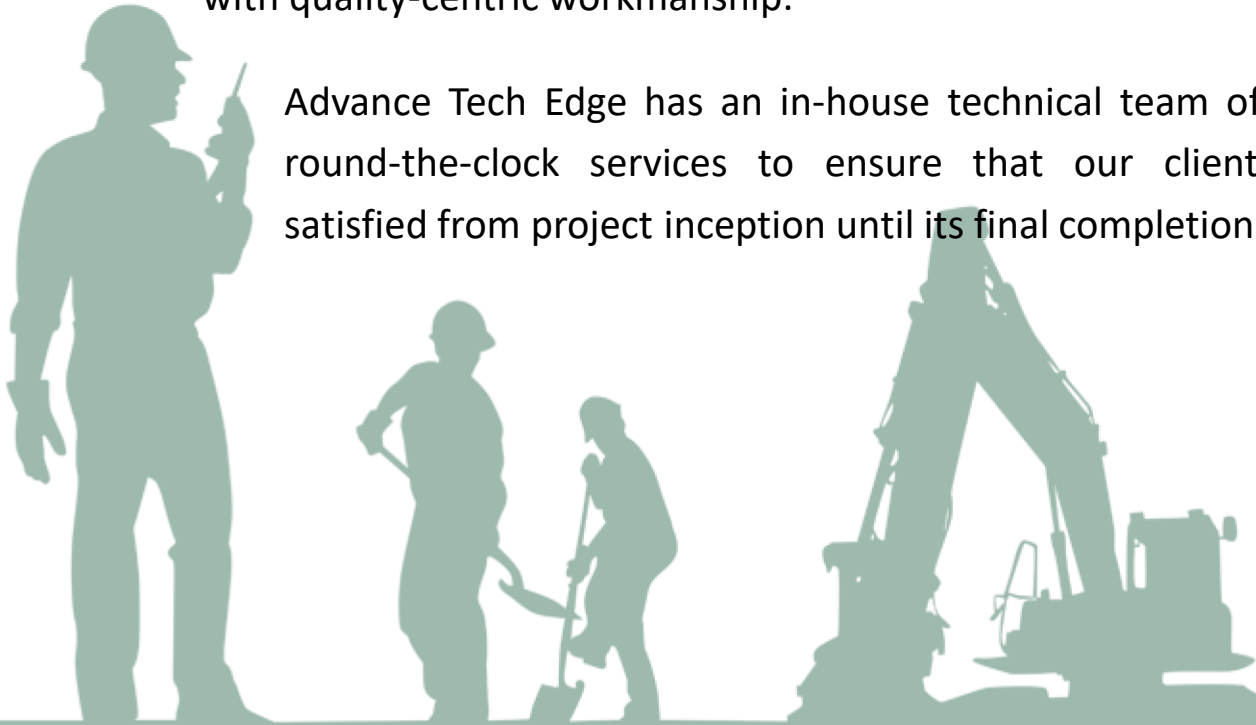
Creative | Conceptual | Inventor

- Oil & Gas
- Industrial
- Infrastructure works
- Pipeline
- Buildings
- Roads
- Water and sanitation work
- Electrical works
- Mechanical works

Engineering

Advance Tech Edge success stems from its dedication to provide customers with proven professional services and cost-effective solutions driven by transparency. As such, the company focuses on delivering tailor-made projects with quality-centric workmanship.

Advance Tech Edge has an in-house technical team offering round-the-clock services to ensure that our clients are satisfied from project inception until its final completion.



Advance Tech Edge broad range of engineering services and solutions include:

- ➔ **Conceptual and preliminary engineering**
- ➔ **Evaluation of tender documents**
- ➔ **Design review and value engineering**
- ➔ **Project cost estimation**
- ➔ **Equipment and materials procurement**
- ➔ **Planning and scheduling**
- ➔ **Detailed design & shop drawings**
- ➔ **Inspection, quality assurance and control**
- ➔ **Testing & commissioning**
- ➔ **Operator training**





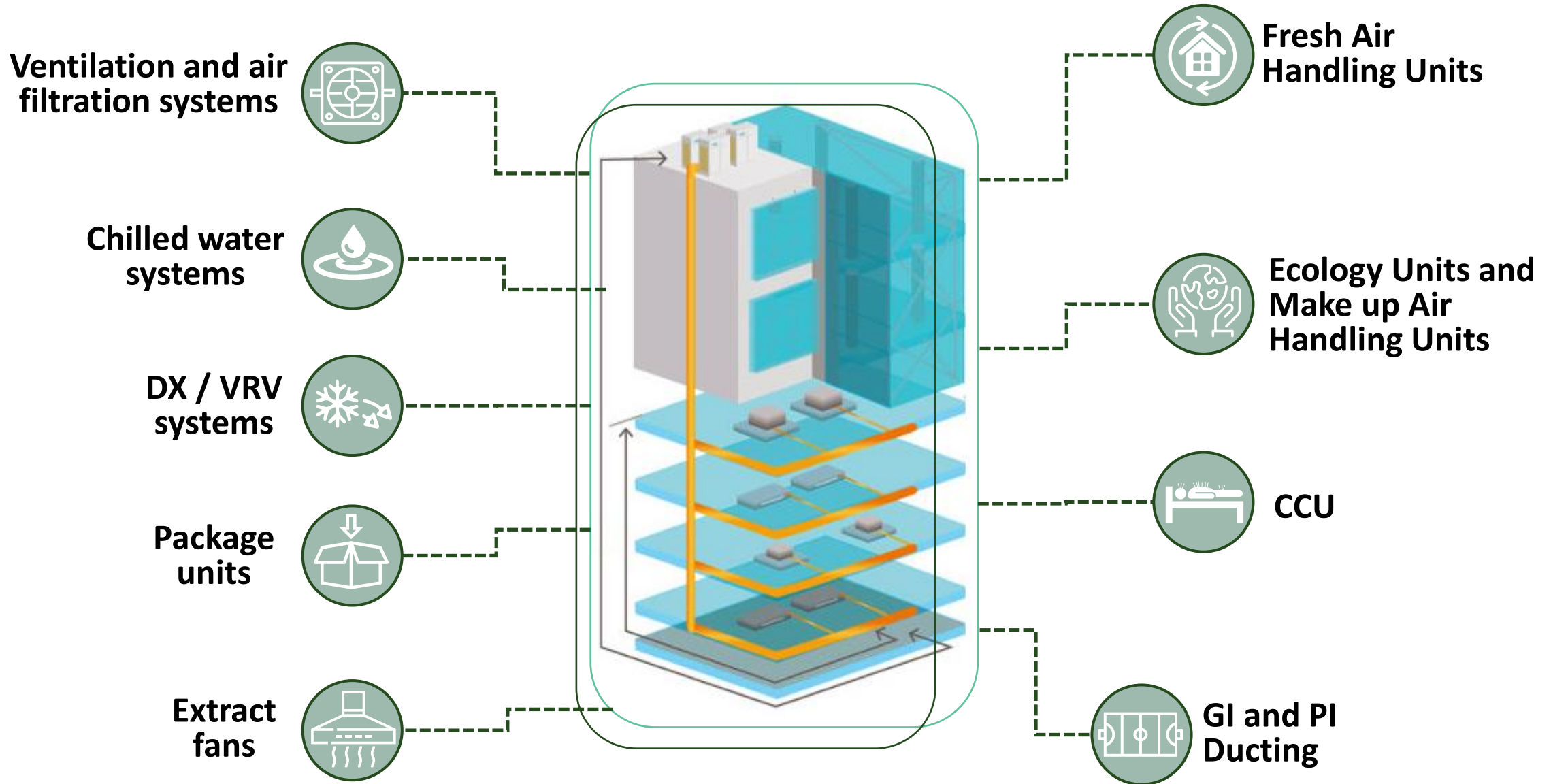
Mechanical

HVAC

We install, maintain and repair climate-control systems in homes, school, hospitals, factories, office...Providing thermal comfort and maintaining good indoor air quality is our main purpose.

Advance Tech Edge strives to install systems with the perfect quality-cost balance that successfully provides superior air quality while incurring low energy costs and allowing easy maintenance.

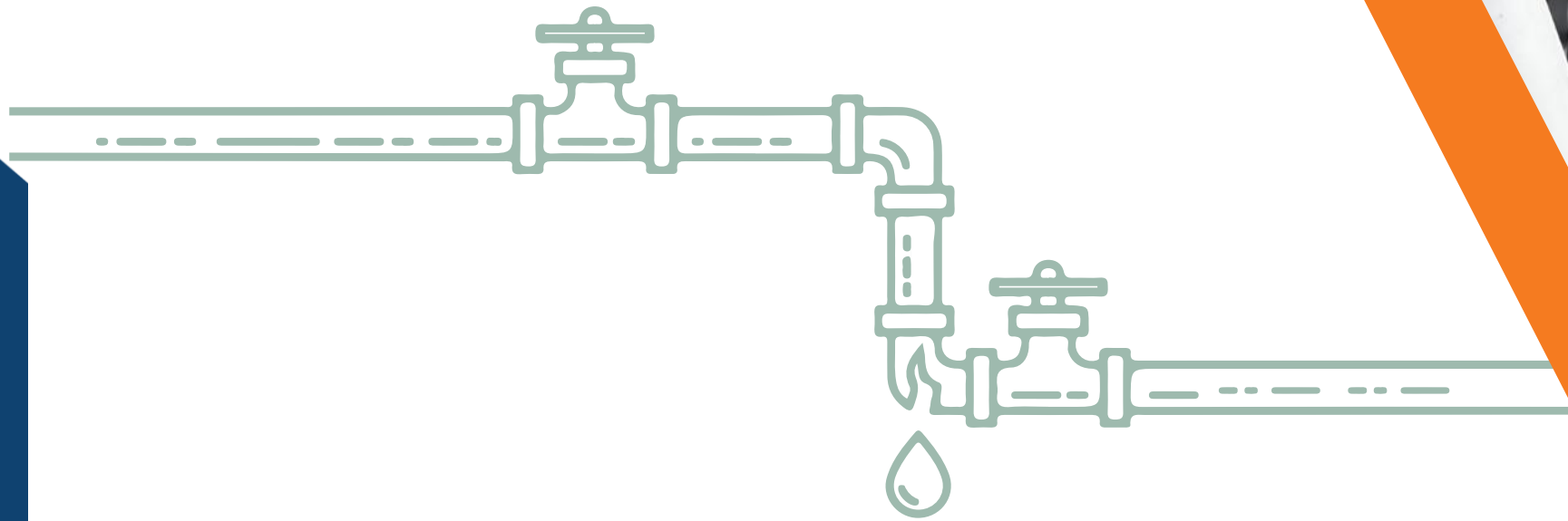
What sets us apart is that our team undergoes continuous extensive training that is unmatched in the industry. We follow blueprints and specifications for installation, inspect and maintain systems, install controls, test individual parts, and replace worn-out components.



Plumbing

Advance Tech Edge puts lots of emphasis to ensure that every plumbing system installed is equipped with well sized and securely connected pipes, drains fittings, valves, valve assemblies and devices for the proper distribution of water.

Our Designers always assure to implement KSA and regulations and standards to guarantee delivering best quality.



The plumbing systems that We specializes in:

Sanitary and
drainage systems

Water
distribution

Water
treatment

Variable and fixed
speed pumping
systems

SERVICE
PLUMBER

Solar
Heaters

Kitchen and
laundry plumbing

Irrigation systems
and controls

Sand traps and
grease traps

Fire Fighting

The reliable protection systems we install have one main purpose which is to prevent the interruption of services necessary for the public welfare and avoid area wide conflagrations, all the while putting the safety of life at the utmost priority.

- **Fire suppression systems**
- **Fire extinguishers**
- **Fire hose reels**
- **Fire hydrant systems**
- **Automatic sprinkler systems**
- **Dry and wet riser**





Electrical Low Voltage

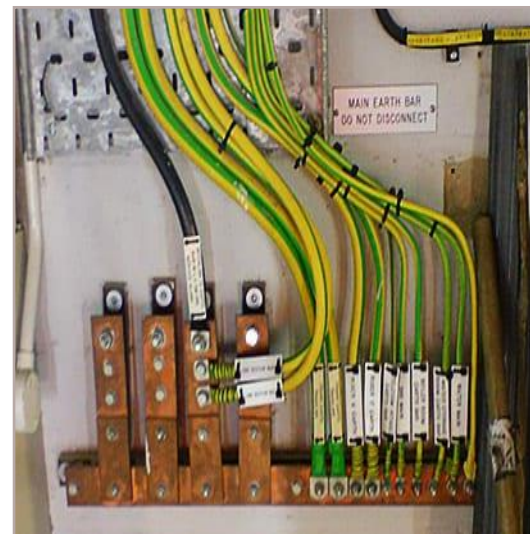
Advance Tech Edge engineers' low voltage systems that distributes power where is needed, safely and reliably, while providing optimal protection for personnel and equipment.

Our range of low voltage distribution elements includes:

- Grounding
- Main Distribution Boards (MDB)
- Secondary Main Distribution Boards (SMDB)
- Final Distribution Boards (FDB)
- Cables
- Lighting fixtures
- Sockets

Emergency power systems are extremely useful in many different settings such as residential homes, hospitals, research laboratories, data centers, and telecommunication centers. Advance Tech Edge specializes in many emergency power systems that include:

- Generators
- UPS



Low Current

Advance Tech Edge Provides fully integrated security and low current systems, harvesting the power of networking and IT infrastructure to offer the end user with a reliable, customizable, and upgradable solution.



Data and Communication



Fire Alarm



Access Control



Queue Management System



Legal Documents



Legal Documents

الرقم الموحد : ٧٠٣٨٣٢٥٥٣١
رقم المنشأة : ١٠١٠٩٨٣٢٣٥
التاريخ : ١٤٤٥/٠٨/٠٣ هـ

شهادة تسجيل مؤسسة فردية Individual Establishment Registration Certificate



الاسم التجاري للمؤسسة : مؤسسة ركن التقنية المتقدمة للمقاولات العامة
مركزها الرئيسي : ٧٧٦٧، وادي الجريز، حي الخالدية، ٤٠٠٠
هاتف : الرمز البريدي : ١٢٨٧٤ ص. ب :
إسم التاجر : حسن اسماعيل حسن الزرعوني الجنسية : اماراتي تاريخ الميلاد : ١٣٩٨ هـ
رقم السجل المدني - الإقامة : ٢٥٦٦٧٣٢٠٦٧ تاريخه : مصدره :
رقم الحفيظة - الجواز : تاريخه : مصدره :
النشاط : للاطلاع على بيانات الأنشطة الرجاء مسح الرمز التجاري
رأس المال : ٢٥٠.٠٠٠ خمسة و عشرون ألف ريال فقط لا غير
إسم المدير أو الوكيل المفوض : خورشيد علام محمد ميندين
الجنسية : هندي تاريخ الميلاد : ١٣٩٨ هـ مصدره :
رقم السجل المدني - الإقامة : ٢٤٠٨١٦٠٧٦٦ تاريخه : مصدره :
سلطات المدير :
يشهد مكتب السجل التجاري بمدينة الرياض : بأنه تم تسجيل المؤسسة المذكورة أعلاه بمدينة الرياض
وتنتهي صلاحية الشهادات في : ١٤٤٦/٠٨/١٤ هـ بموجب الإيصال رقم : ٢٤٠٩٦٣١٨٣٠٧١ وتاريخ : ١٤٤٦/٠٣/٠٤ هـ

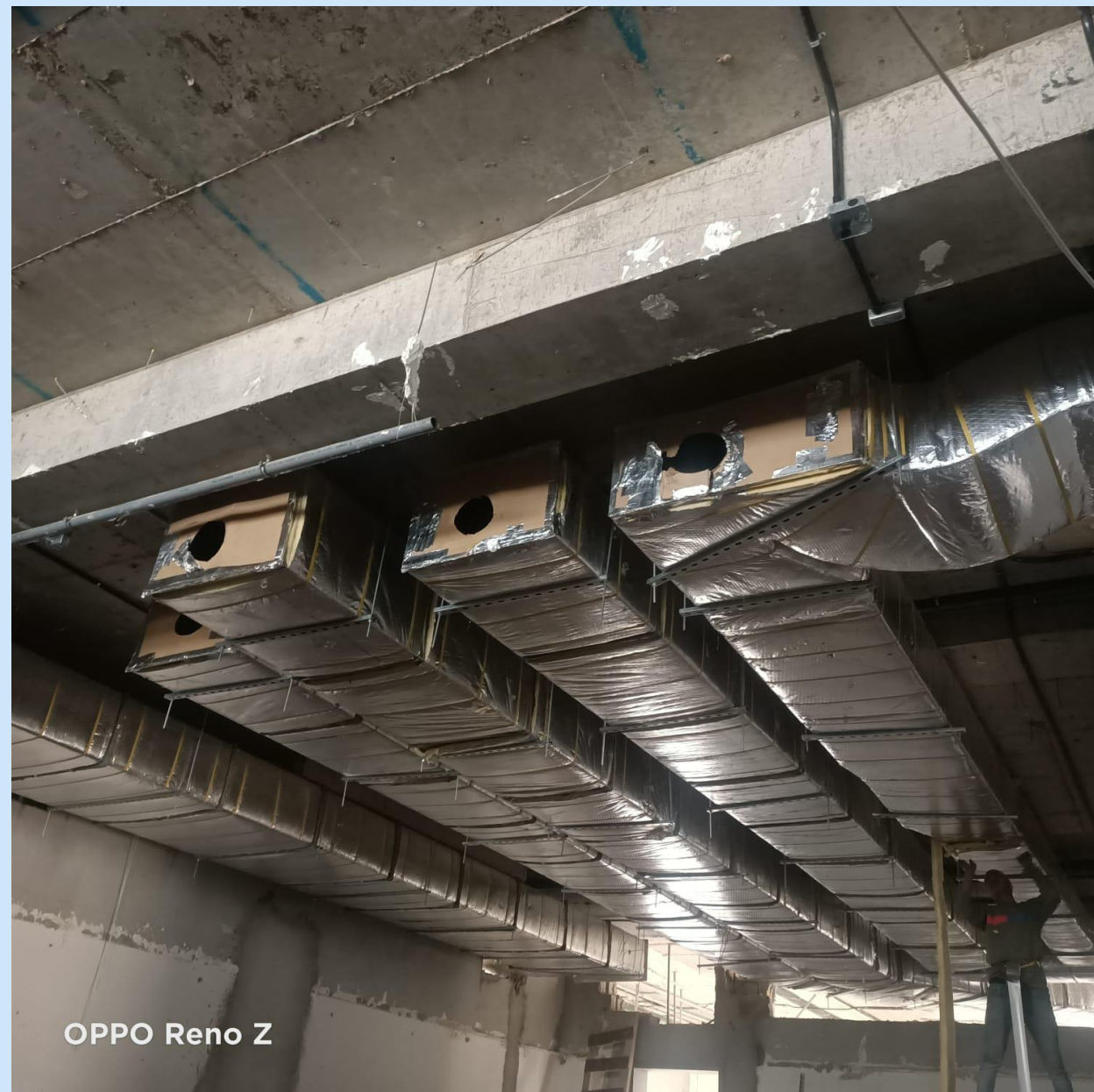


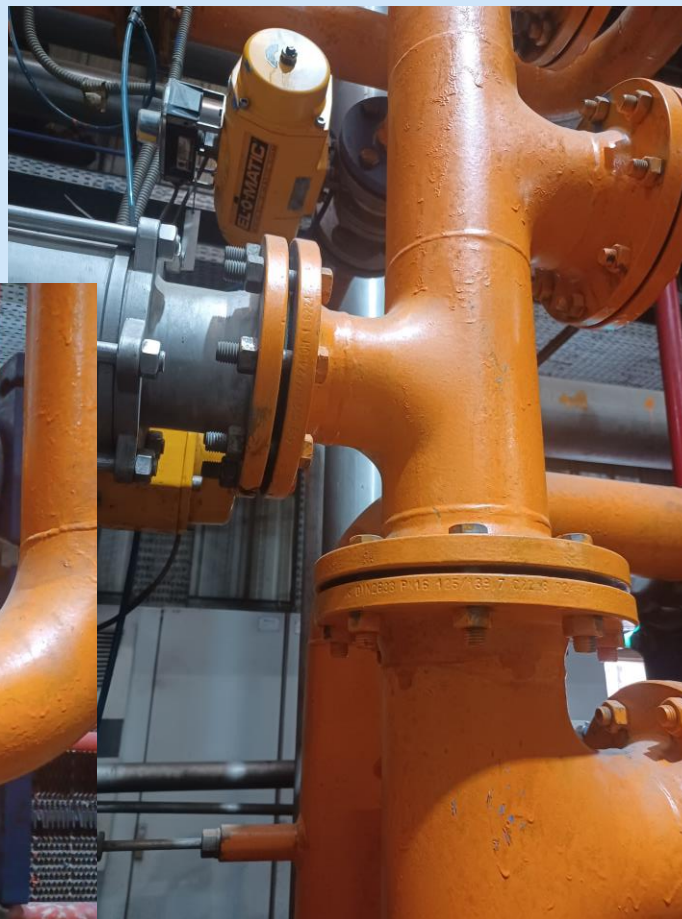
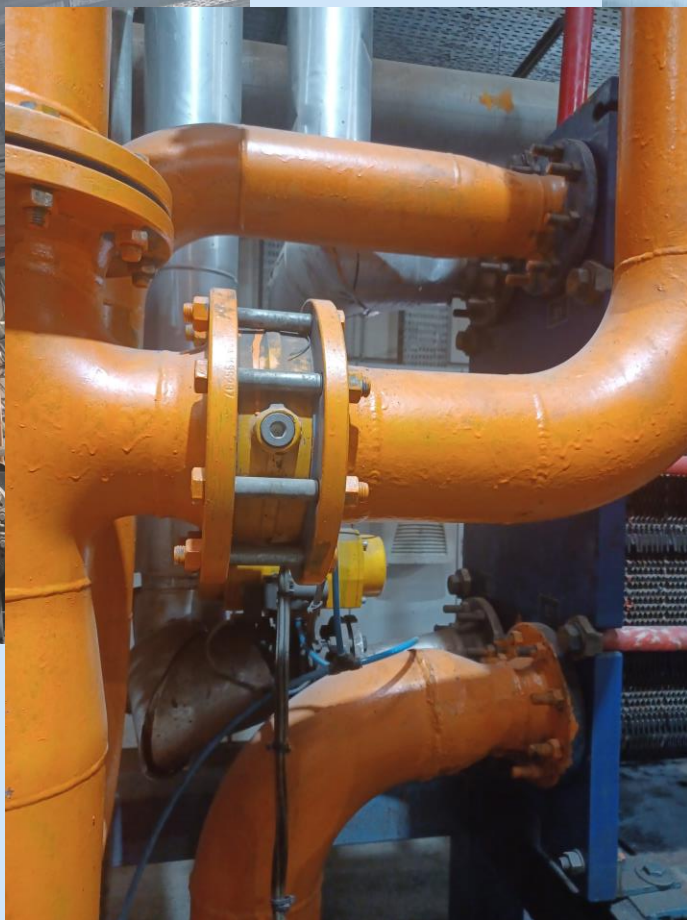
To Verify The Information Of This Certificate Visit <http://qr.mc.gov.sa> يمكنكم التحقق من صحة هذه الشهادة بالدخول على

+966 11 294 4444 | Riyadh 11162 | Kingdom of Saudi Arabia | المملكة العربية السعودية | www.mc.gov.sa MCgovSA @ f t y o

Some Pictures from Our Projects



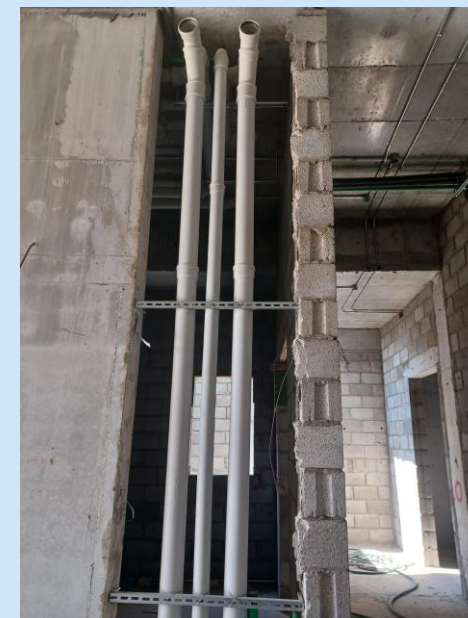


















ركن الفنية المتقدمة
Advance Tech Edge



📍 Wadi Al Jarir, Al Khalidiya, P.O. 7767, Riyadh 12874, KSA

☎ +966 50 773 4239

✉ info@atechedge.com

🌐 www.atechedge.com